



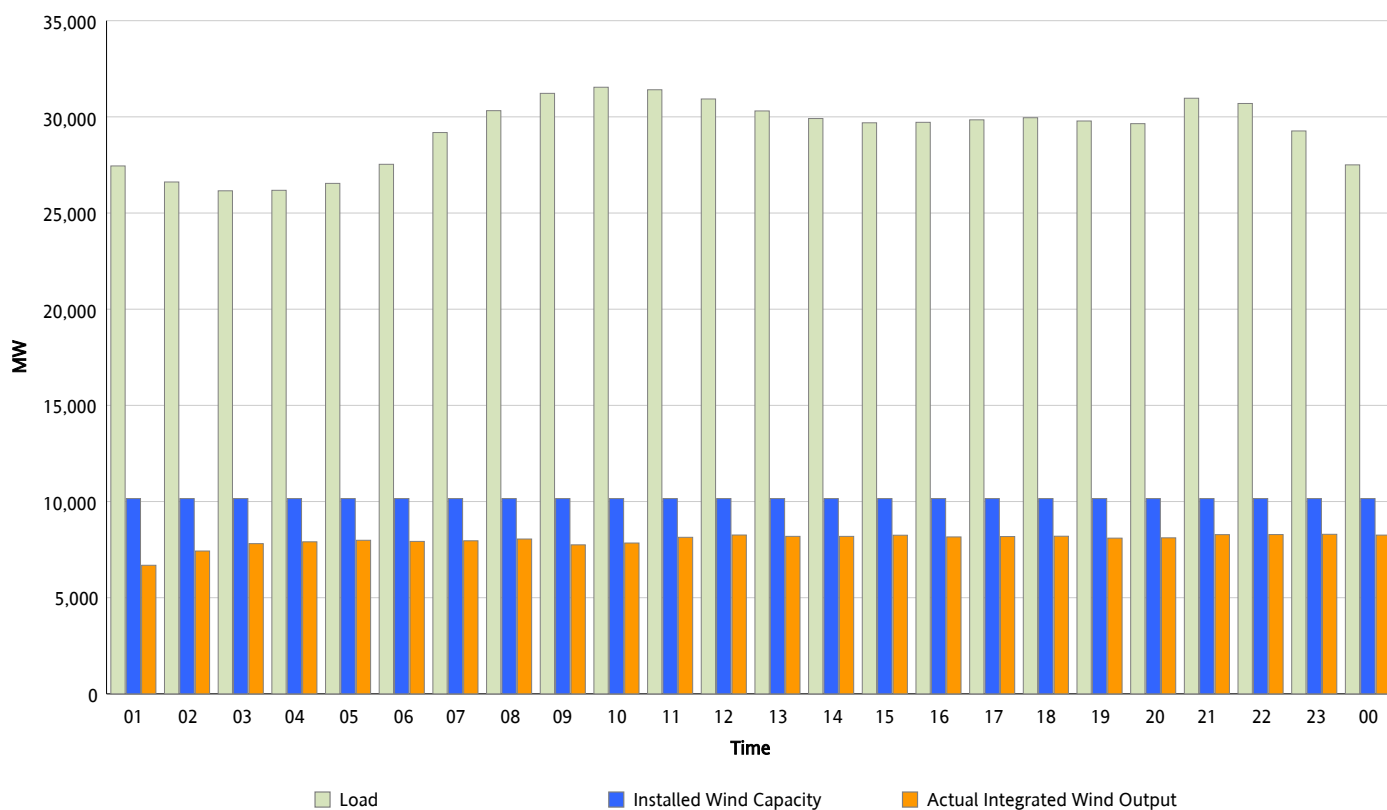
ERCOT Grid Operations

Wind Integration Report : 04/20/2013

Peak Load	31,540 MW
Load Peak Hour (HE)	10
Wind Over Peak	7,844 MW
Wind Record 02/09/13	9,481 MW
Max Wind Value*	8,446 MW
Wind Peak Time	20:50
Wind Integration %	27.05 %

Hourly Average Actual Load vs. Actual Wind Output

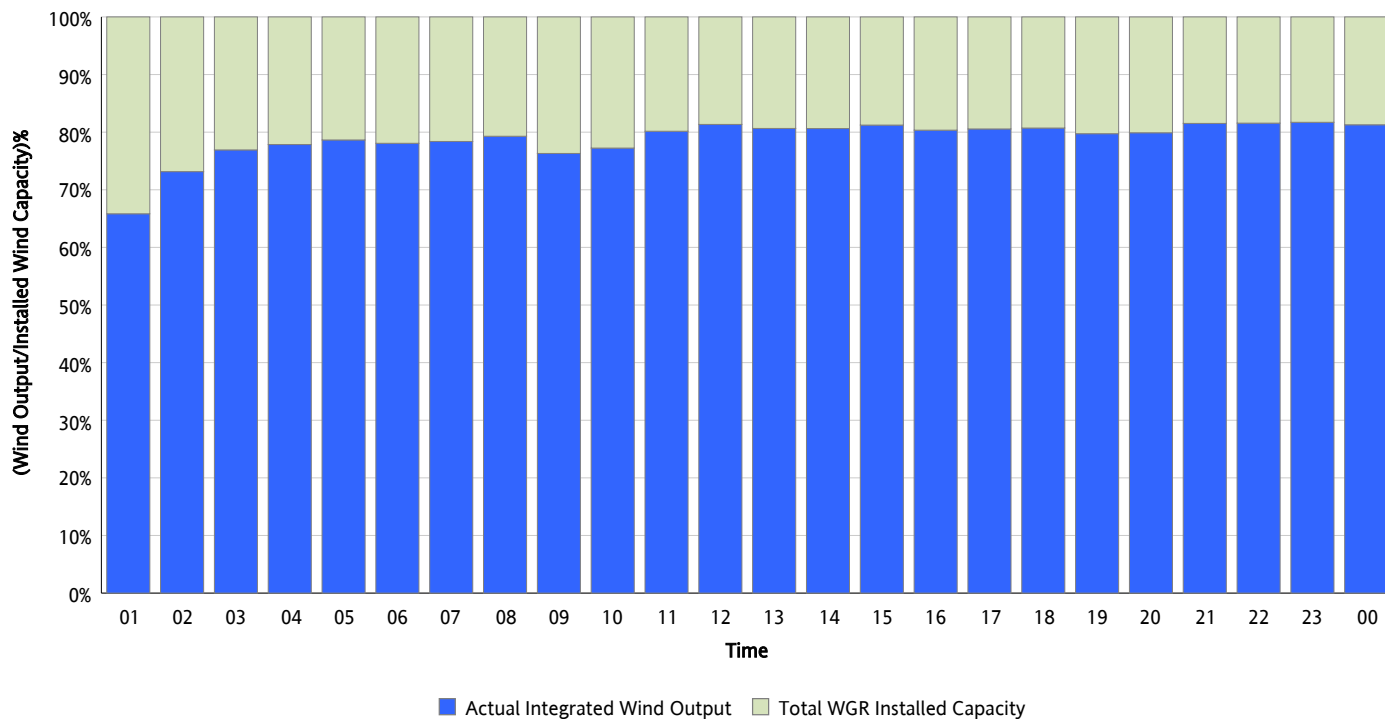
04/20/2013



* Wind Record and Wind Max represent instantaneous values and the rest of the values are integrated over the hour

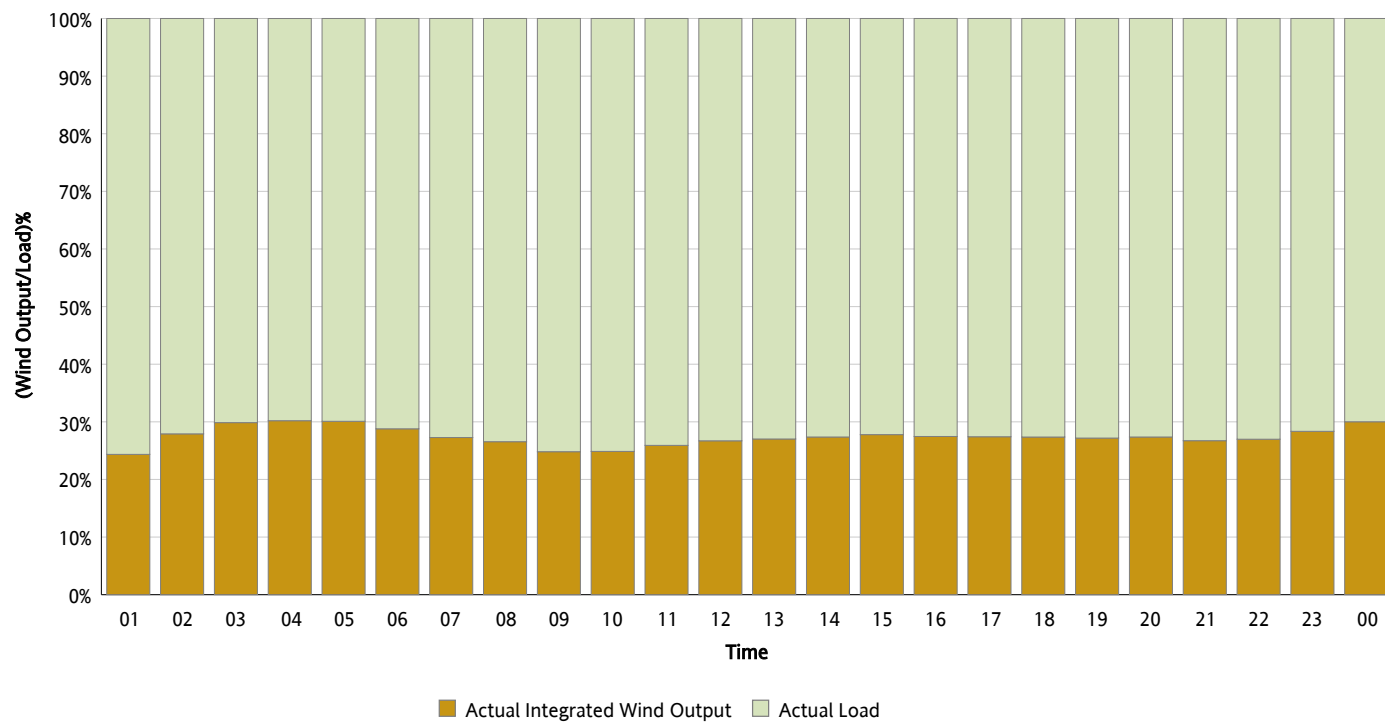
Actual Wind Output as a Percentage of the Total Installed Wind Capacity

04/20/2013



Actual Wind Output as a Percentage of the ERCOT Load

04/20/2013



ERCOT Load vs. Actual Wind Output

04/13/2013 - 04/20/2013

